

### Shabbat and Service Schedule September 2022

Please check the [website](#) and Shavuon for the most current information. For services where a Zoom tech is unavailable, the siddur will not be shared on screen.

*See pages 8–9 for the High Holy Day Schedule.*

#### Friday, September 2

Candle Lighting 6:59 pm

#### Saturday, September 3

*Parashat Shof'tim*

Shabbat Morning Service 9:30 am

with Elisheva Pripas using *Mishkan T'filah*

Israel Chavurah noon

#### Friday, September 9

Candle Lighting 6:46 pm

Shabbat Evening Service 7:00 pm

#### Saturday, September 10

*Parashat Ki Teitzei*

Shabbat Morning Service 9:30 am

with Cantor Vera using *Sim Shalom*

Weekly Parashah Study 1:00 pm

#### Friday, September 16

Candle Lighting 6:34 pm

#### Saturday, September 17

*Parashat Ki Tavo*

Shabbat Morning Service 9:30 am

with Cantor Vera using *Mishkan T'filah*

No Weekly Parashah Study

S'lichot Service 8:00 pm

#### Friday, September 23

Candle Lighting 6:21 pm

#### Saturday, September 24

*Parashat Nitzavim*

Shabbat Morning Service 9:30 am

with Mindy Harris using *Sim Shalom*

Weekly Parashah Study 1:00 pm

#### Friday, September 30

Candle Lighting 6:09 pm

#### Saturday, October 1

*Parashat Vayeilech*

Shabbat Morning Service 9:30 am

with Cantor Vera using *Mishkan T'filah*

Weekly Parashah Study noon



Dear kahal, dear community,

Last month Rabbi Micah Shapiro led us, in a beautiful evening of music sponsored by our Music Committee, through his song of t'shuvah: Hashiveini.<sup>1</sup> Hashiveini v'ashuvah; chadeish yameinu k'kedem. Help me return, and I'll return; renew our days like before. The song's two parts return over and over, renewing one another, encouraging us to revisit the spaces in our souls that need our attention.

Each of us is now deep into our season of t'shuvah, repentance/return/restitution, as we approach the Yamim Nora'im, the High Holy Days, together. On Tisha b'Av, "Hashiveinu v'nashuvah, chadeish yameinu k'kedem,"<sup>2</sup> voiced entirely in the communal "we," started us on this seven-week journey of self-reflection. Rabbi Shapiro's song invites me to think of t'shuvah as a process of both returning something (forgiveness, apology, what was taken, emotional energy), and re-turning ourselves. Turning ourselves over and over, looking closely, trying out new positions and perspectives on what we've done, and how we might want to go forward.

In Mishnah Pirkei Avot 5:22, we read: "Ben Bag Bag omeir: hafoch bah v'hafoch bah, d'chola vah." Turn it [Torah] and turn it, for all is in it. Judaism teaches that just as the Torah holds us all—our stories and hopes and dreams—each one of us is like a Torah; we contain a world in ourself. Both we and Torah are worthy of our most attentive study. During Elul, in our t'shuvah, we turn ourselves over and over, looking closely and honestly. Sometimes we discover something new. It might be something that surprises us, provokes us, impresses us, disturbs us.

We cannot do this alone. Community is what makes a container for us to do this transformative self-reflection, this generative turning. Alone, we'd tremble like a driven leaf. We'd be afraid to fall, or to fall apart. In community, we know that we're held—that while we are turning, someone else is there to catch us.

*When, as one community, we call out together, God hears us.*

The medieval Spanish commentator Rabbi Moshe ben Maimon (the Rambam) addresses the power of community to effect and elevate t'shuvah throughout the year, beyond the High Holy Days.

Even though t'shuvah and crying out are desirable all year, on the ten days between Rosh Hashana and Yom Kippur, they are more desirable, and are immediately received, as it says (Isaiah 55:6): "Seek out God while God may be found." [Call to God while God is close.] This is talking about someone who is doing teshuva alone. But whenever a community (tzibbur) is doing t'shuvah and crying

*Cantor's Message continues on next page*

## CANTOR'S MESSAGE

*Cantor's Message continued from previous page*

out with a full heart, they are answered, as it says (D'varim 4:7): "[For what great nation is there, that has God so near to them] as Hashem our God whenever we call to Them."<sup>3</sup>

We need one another. We need our community. That's how our hearts expand. That's how we can safely do this great and vulnerable work of t'shuvah. **Spiritual and physical safety for our community go hand in hand and are achieved through the same best practices. Show up for each other; greet each other; get to know each other.**

We're not asked to peel back our protective layers alone, but to practice vulnerability and compassion with each other. When you [come to services](#), in person and online; when you reach out to one another with a holiday greeting or ask after someone's shalom, their well-being; when you sing, loud and proud, in community; when you reflect on our communal Elul writing prompts and know that others are doing the same; when you take a walk, share a meal, do a mitzvah, you're strengthening our community's connective tissue and your own capacity for chesed, lovingkindness. When, as one community, we call out together, God hears us. Our call creates the k'dushah, the high holiness, of these holy days. And we pray to be answered with strength and compassion and together to build, in these days, the spiritual tools that together we can wield all year long.

Let's do this!

Shanah tovah umtukah, wishing you a beneficial and sweet year,  
Cantor Vera

1. Lamentations [5:22](#) and Jeremiah [31:18](#)
2. Lamentations [5:22](#)
3. Mishneh Torah, Hilchot T'shuvah [2:6](#), Rambam

### *Elul Writing Practice with Cantor Vera*

Meditative, guided writing as a tool for cheshbon hanefesh—an accounting of our souls, to prepare for the High Holy Days.

Email [Cantor Vera](#) to receive writing prompts each week during the month of Elul. Our writing practice will start on the evening of Sunday, August 28.

### Choir Rehearsals September 11 and 20 7:00 pm



## The Torah of Tolkien The Return of HaMelech *Lessons for the High Holy Days*

with

Cantor Vera Broekhuysen, Temple Emanu-El, Haverhill, MA  
Rabbi Esther Hugenholtz, Agudas Achim Congregation, Coralville, IA



Let's prepare together for the Days of Awe and the *Lord of the Rings: The Rings of Power* series! We'll explore Tolkien's theology, the ethical and narrative themes that *LOTR* and the machzor share, and the role of t'shuvah in Tolkien's life and works.

All are welcome!

Monday, September 12 | 5:30 pm CDT / 6:30 pm EDT | via Zoom

Register at [https://bit.ly/Return\\_of\\_HaMelech](https://bit.ly/Return_of_HaMelech)



## PRESIDENT'S MESSAGE



Dear Temple Emanu-El Congregants,

As September approaches, we are officially gearing up for the High Holy Days. Temple staff are working in overdrive to prepare a variety of services and other events for all age levels to meet the spiritual needs of our diverse community. During this busy season, we need your help more than ever. If you have some extra time to help prepare prayer books for services, participate in a breakout session during a service, or bake for Chesed, please reach out to either Lisa (978.373.3861 / [office@TempleEmanu-El.org](mailto:office@TempleEmanu-El.org)) or Cantor Vera ([CantorB@TempleEmanu-El.org](mailto:CantorB@TempleEmanu-El.org)). Your participation makes our community stronger.

This month, I would like to challenge you, my Temple Emanu-El community, to tell me something you are looking forward to in the new year, share a favorite Temple memory, make a special request for the High Holidays (services or otherwise), or just say hi. Let me know what you are looking for at this time of year and what you find most meaningful in our temple. Please email me at [president@TempleEmanu-El.org](mailto:president@TempleEmanu-El.org)—I hope my inbox overflows!

I look forward to seeing many of you, in-person or on the Temple's projection screen in the sanctuary, at the High Holy Day services. Please take care, enjoy your holiday preparations, and give generously to the [High Holy Day appeal](#).

L'Shanah Tovah,  
Jenn Lampron  
President



Please consider donating to our  
High Holy Day fundraiser.  
Donate [online](#),  
or contact the Temple office.  
Thank you!

### COMMUNITY NEWS

#### WELCOME NEW MEMBERS

*Daniel and Vera Goldberg  
Kyle Rys and Carrie Rainen*

#### MAZEL TOV

*Daniel and Vera Goldberg, on the birth of their son, Nathan Goldberg*

*David and Mattie Paul, on the marriage of their daughter Goldie to Richard Lehmann*

#### TODAH RABBAH

*Paul Fitts, for repairing a Torah scroll pole and helping our sifrei Torah stay healthy and ready for use!*

*Kimberly Callan, Rachel Hanson, Amy Sherr, and Betsy Webb, for providing refreshments for Rabbi Micah Shapiro's service*

*Zoom techs Andrea Pentabona, Shoshana Dodge, and Joy Silvey*



### From the Chesed Committee

- **Kids in college or the military?** Please notify the Temple office by September 7 if your child in college or the military should be remembered with a holiday package from the Temple Emanu-El Chesed Committee.
- **The Chesed Committee needs bakers!** Attached is our [recipe for honey cookies](#), which we'll use in our High Holy Day packages. If you're able to help, please let Sharyn Russell ([sruss1010@aol.com](mailto:sruss1010@aol.com)) know, and bring your cookies to the temple by Sunday, September 18, at 10:00 am.
- **A mitzvah opportunity for the new year**—drop off a holiday gift package to an older person in our community. Please contact Sharyn Russell (978.372.5777 or [sruss1010@aol.com](mailto:sruss1010@aol.com)) to let her know your availability. Share this opportunity with your kids!





## GREATEST GENERATION SPOTLIGHT

### *Spotlight on Thelma Grant*

Thelma Grant of Andover has been a lifelong member of Temple Emanu-El since our temple was founded. In her life, she says, she's had some good things happen to her and some hard. But her family was with her "through thick and thin," and they remain her bedrock. Thelma is her family's "saver of photos," and she loves pulling out the albums and looking through family memories together with her sister. Thelma looks forward enormously to being with her family for the High Holy Days!

Thelma is a Haverhill native, the daughter of Nathan and Julia Berman (z"l). Julia was a beautiful, accomplished needlewoman. She needlepointed, made afghans, and created a dress out of ribbons for Thelma, which Thelma's daughter Jeri now keeps safe. Thelma grew up with her beloved siblings: Karen, with whom she still talks on the phone every night, and Sumner (z"l). Sumner was "a charmer," known by all in Haverhill. Thelma loved Haverhill High and fondly remembers dances with the Junior Buds (a BBYO girl's group). She was the first of her group of friends to get a driver's license, and "would drive through town like a millionaire!" in her dad's car, with her girlfriends chatting all around her. Modeling in one of Temple Emanu-El's fashion shows gave Thelma and her good friend Pat a thrill.

At the age of eighteen, Thelma left her medical secretary studies at Mount Ida to wed her first husband, Joe Balter (z"l). Her parents threw a big Boston wedding, and Thelma floated down a grand staircase to the reception wearing an ice-blue dress. Thelma remembers long walks with their firstborn, Jeri, around Monument Square, Jeri wearing beautifully ironed dresses "like a doll." Jeri's brother, Bruce, was born three years later. Thelma is grateful for the support of her parents and Rabbi Jacobson during difficult times early in her kids' lives.

She and Joe eventually went their separate ways, and they remained friendly co-parents.



Thelma's second husband Al Grant (z"l) was a Boston guy in the wine business; Thelma shook with nerves, as a mother of young kids, going on their first date! Al's kindness and consideration won her over. Her children were welcome on their dates. "Al, Al, the kiddies' pal" never said no to her kids and treated Thelma "like a queen." Tragically, Al suffered a catastrophic cardiac event in Boston. He remained unresponsive for nine months, Thelma advocating all the while for his daily care: "I never knew I could be 'a pushy,' but if you care enough, you push!" Ultimately, Thelma was widowed in 1997.

She sought the comfort of others with similar experiences in a Haverhill bereavement group for widows and widowers run by Nancy Thornton. The group became a lifeline: "We told things to each other that we'd never told anyone. We laughed, we joked, we cried." They met for coffee and doughnuts at each other's houses, rented a bus "like crazy kids" to go down to Boston and take a Duck Boat, and even celebrated a few weddings within the group in the early days, including Thelma's marriage to George Caparell (z"l). Sadly, George died over a decade ago.

Thelma is happy to see so much of her children, her grandchildren, her sister Karen, and Karen's family. She's grateful for the help that her children offer her. She's especially proud that "both of my kids have wonderful jobs, wonderful lives, and gave me wonderful grandkids. I can't complain." Thank you, Thelma, for sharing the story of your life with Temple Emanu-El: your story is part of ours!



## *Shana Tovah!*

*The officers, board of directors, and professional staff of Temple Emanu-El wish everyone a happy, healthy, and prosperous New Year!*



## YOUTH AT TEMPLE EMANU-EL

### **Playing is Praying: Our New Sanctuary Playspace!**

Play and prayer are for everyone! We celebrate our community's kids, and we're excited for kids and their play to be more fully present in our sanctuary services. It's a joy to invite members and guests of all ages into our new sanctuary playspace, made possible by the generosity of Rebecca Alpert and Andy Twomey. Our Playing is Praying area is also where our Sunday morning J-Play! playgroup takes place, facilitated by Shoshana Dodge (see below for dates & details). Come on in, check it out, and get comfy!



## Welcome, Religious School Students and Families!

Religious school begins on **September 11**.

Drop off your students and stop by the open house to nosh and shmooze!

It's not too late to register.  
<https://bit.ly/RSReg2022-2023>



\$75/child  
(\$150/family maximum)



**J-PLAY!**  
For infants up to pre-K



J-Play! is designed for children ages infant to pre-K. It's a periodic Sunday morning playgroup in our new sanctuary playspace, coordinated by member Shoshana Dodge. Come meet other families with young kids, play together, and enjoy getting comfy in holy space. Temple membership is not required for J-Play!



Sundays, 9:30-10:30 am  
September 18, October 16, and December 18  
RSVP to [office@TempleEmanu-El.org](mailto:office@TempleEmanu-El.org)



Please join the religious school families as we celebrate the new year with an apple-picking excursion!

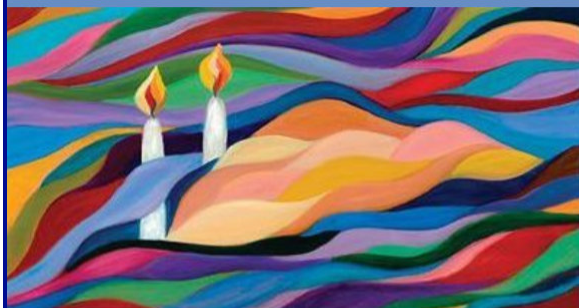
## APPLE PICKING!

Sunday, September 25 @ 10:00 am  
Barker's Farmstand  
1267 Osgood Street, North Andover

Rain or shine!

## UPCOMING SERVICES

### SHABBAT EVENING SERVICES



|             |   |         |
|-------------|---|---------|
| September 9 | Shabbat Evening Service                                     | 7:00 pm |
| October 7   | Tot Shabbat Service<br>and Sukkah Decorating                | 6:00 pm |
| October 14  | Shabbat Evening Service<br>and Hot Dogs in the Hut @6:00 pm | 7:00 pm |
| October 28  | Shabbat Evening Service                                     | 7:00 pm |

### S'lichot סליחות

SATURDAY  
SEPTEMBER 17  
8:00 PM  
Sanctuary and Zoom

Please register for  
the Zoom link at  
<https://bit.ly/TEHHD5783>



### SHABBAT MORNING SERVICES

SATURDAYS AT 9:30 AM  
HYBRID | SANCTUARY AND ZOOM

September 3, led by Elisheva Pripas  
followed by Israel Chavurah

September 10, led by Cantor Vera  
followed by weekly parashah study

September 17, led by Cantor Vera  
no weekly parashah study

September 24, led by Cantorial Soloist Mindy Harris  
followed by weekly parashah study

Click to join via Zoom.



**Memorial Service**  
**Sunday, September 25 | 1:00 pm**  
**Children of Israel Cemetery**  
**Middle Road, Haverhill**



### Upcoming Temple Meetings

Religious Practices Committee  
September 7 @ 7:30 pm

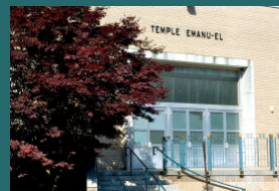
Executive Committee  
September 14 @ 7:00 pm

High Holy Day Greeters  
September 18 @ noon

Social Action Committee  
September 19 @ 7:30 pm

Dayenu Circle  
September 29 @ 6:30 pm

### Notes from the office—



- Moving? Email change? Please send us your new address.
- The deadline for articles and news for the October bulletin is September 20. Send your information to [office@TempleEmanuel.org](mailto:office@TempleEmanuel.org).



## UPCOMING EVENTS

**Israel Chavurah**  
*Saturday*  
*September 3 @ noon*  
Click to attend.



**Spirited Aging**  
*Together*

**Tuesday, September 6 @ 10:00 am**

Meeting this month at a member's home.  
**Please contact the temple office for the address.**

Hybrid. [Click here](#) to join by Zoom.

Sponsored by the Temple Emanu-El Chesed Committee



 **Introduction to Judaism** 2022-2023

September 2022 to March 2023  
Thursdays | 7:30-9:00 pm | via Zoom

Ready to learn about Judaism from a diverse, enthusiastic, and knowledgeable group of clergy teachers? Join Cantor Vera and her colleagues from other North Shore congregations for *Introduction to Judaism!* The class schedule and registration link are available on the [Temple Emanu-El website](#).

Introduction to Judaism is a free program of the Lappin Foundation in partnership with the North Shore Rabbis and Cantors Association.

 **Temple Emanu-El**  
Haverhill, MA

**Open House**  
**Sunday, September 11**  
**9:00-11:00 am**

**Free first-year membership**  
(including High Holy Day tickets)

- ~Meet Cantor Vera, religious school educators, and lay leaders
- ~Tour our building
- ~Learn about our programs and services

For more information or to RSVP:  
978.373.3861 or [office@TempleEmanu-El.org](mailto:office@TempleEmanu-El.org)

514 Main Street, Haverhill, MA 01830

**Elul Song Session**  
Wednesday, September 21 | 7:00 pm  
Hybrid: Sanctuary and Zoom  
Join at <https://bit.ly/ElulSongSession>



The songs of the High Holy Days open the gates to the Days of Awe. They help us turn—in prayer, in praise, and in repentance—toward the most sacred moments in our year.

Join Cantor Vera for an Elul song session. We'll sing through the tunes that Moshe brought down the mountain to us, and also dip into some new melodies that will be part of our services this year.

All words will be provided—bring yourself, your ears, your voice!

To listen to recordings of some of our Temple's High Holy Day tunes, please visit the Shabbat and Holiday Melodies page in the Worship section of our website.  
[www.TempleEmanu-El.org/shabbat-and-holiday-melodies.html](http://www.TempleEmanu-El.org/shabbat-and-holiday-melodies.html)



**Temple Emanu-El Dayenu Circle**

Please join us to discuss the steps we can take as a community to address the climate crisis.

**September 29 | 6:30 pm**  
**Starensier or [join via Zoom](#)**

 **DAYENU**  
A Jewish Call to Climate Action

For more information about Dayenu, contact Karen Godek ([kgodek@verizon.net](mailto:kgodek@verizon.net)).





# HIGH HOLY DAYS 5783

## ROSH HASHANAH

All events will be hybrid unless otherwise specified below.  
[Register to get the Zoom link](#) (all Zoomed services included).

### Sunday, September 25

#### **Cemetery Service**

**1:00 pm**

Children of Israel Cemetery (in person only)

#### **Erev Rosh HaShanah**

**7:00-8:15 pm**

### Monday, September 26

### Tuesday, September 27

#### **Birchot HaShachar/Psukei d'Zimrah/Shacharit Service**

**9:00-10:30 am**

#### **Yoga, Day 1 only**

**9:00-9:30 am**

Led by Lisa Desberg; Starensier Assembly (in person only)

#### **Family Service, Day 1 only**

**9:00-10:00 am**

For children aged 12 and younger and their families

Chapel (in person only)

#### **Torah Service**

**10:45 am-12:15 pm**

#### **Mussaf Service**

**12:30-1:30 pm**

#### **Tashlich, Day 1 only (in person)**

**4:00 pm:** Two different Tashlich hike options at Winnekenni Castle

**5:00 pm:** Tashlich service at Winnekenni Pond (just off the parking lot)





# HIGH HOLY DAYS 5783

## YOM KIPPUR

All events will be hybrid unless otherwise specified below.  
[Register to get the Zoom link](#) (all Zoomed services included).

### Tuesday, October 4

**Kol Nidrei**  
**7:00-8:30 pm**

### Wednesday, October 5

**Birchot HaShachar/Psukei d'Zimrah/Shacharit Service**  
**9:00-10:30 am**

**Family Service**  
**9:00-10:00 am**

For children aged 12 and younger and their families  
Chapel (in person only)

**Torah Service**  
**10:45 am-12:15 pm**

**Mussaf Service**  
**12:30-1:45 pm**  
Including the Avodah and Martyrology services

**Yizkor Service**  
**2:00-2:45 pm**

**Minchah**  
**4:00-5:00 pm**

The Year We Didn't Fast on Yom Kippur: Scott Hannula will lead a discussion on Talmud Bavli, Moed Katan 9b

**N'ilah Service**  
**6:00-7:00 pm**

**Break-the-Fast**  
**7:00 pm**





## AROUND TEMPLE EMANU-EL



*Cantor Vera and Temple Emanu-El members attend a program at Mayyim Hayyim mikveh in Newton, Massachusetts.*



## Spirited Aging Together

*Temple members gather to enjoy the weather and good company at a Spirited Aging Together meeting.*



## Sukkot is almost here!

- **Build the sukkah!** A small group is needed to help build the sukkah on Thursday, October 6. Please contact Lisa if you're interested.
- **Bring the little ones!** Come to the Tot Shabbat service on Friday, October 7, at 6:00 pm! We'll start by decorating the sukkah!
- **Attend the Sukkot morning service!** Monday, October 10, at 9:30 am.
- **Join us for an interfaith Sukkot service!** Tuesday, October 11, at 7:00 pm. Bring a potluck dish to share.
- **Spend time in the sukkah!** We invite all families to come spend time in our sukkah. A lulav and an etrog will be left in the sukkah for your use.
- **Take pictures of your sukkahs!** Send sukkah pictures to [office@TempleEmanu-El.org](mailto:office@TempleEmanu-El.org) by October 20 for a sukkah bulletin showcase.
- **Contribute to the Emmaus food drive!** Bring canned goods to Temple Emanu-El for our annual food drive for Emmaus.





## TEMPLE COMMUNITY

### Temple Committees

Contact Lisa Anthony or any of the chairs below to join a committee.

|                       |                                       |
|-----------------------|---------------------------------------|
| Adult Education       | Lynn Dreyfuss Martin<br>Sandra Venner |
| Antiracism            | Karen Godek                           |
| Budget                | Judd Nathan                           |
| Chesed                | Sharyn Russell                        |
| Communications        | Paula Breger                          |
| Dues                  | Kevin Miller                          |
| Fundraising           | In need of chair                      |
| HaSifriyah (Library)  | Paula Breger                          |
| House                 | In need of chair                      |
| Investment            | Judd Nathan                           |
| Membership Outreach   | In need of chair                      |
| Music                 | Rachel Hanson                         |
| PTO                   | Lisa Desberg                          |
| Religious Practices   | Sandra Kassin-Deardorff               |
| Religious School      | Andi Hannula                          |
| Renovations           | Kevin Miller                          |
| Security              | In need of chair                      |
| Social                | Scott Hannula                         |
| Social Action         | Lisa Herzl                            |
| Trusts/Wills/Bequests | In need of chair                      |
| Windows to the Future | In need of chair                      |

# Happy Birthday!

Malcolm Beaudett  
Jacob Brindis  
Tylor Dodge  
Paul Elkind  
John Hanson  
Caren Hantman  
Howard Hantman  
Michele Howard  
Freda Anne Hurwitz  
Gerda Kalman  
Astrid Laidlaw  
Amy Sherr

### Temple Leadership and Administration 2022-2023

#### Executive Committee

|                  |                     |
|------------------|---------------------|
| Jennifer Lampron | President           |
| Scott Hannula    | Secretary           |
| Paula Breger     | Assistant Secretary |
| Judd Nathan      | Treasurer           |
| Loren Goldstein  | Past President      |

#### Board of Directors

|                         |      |
|-------------------------|------|
| Shelly Gladstein        | 2023 |
| Karen Godek             | 2023 |
| Rachel Hanson           | 2023 |
| Lisa Herzl              | 2023 |
| Sandra Kassin-Deardorff | 2023 |
| Joy Silvey              | 2023 |

#### Temple Administration

Vera Broekhuysen, Cantor  
Ira L. Korinow, Rabbi Emeritus  
Lisa A. Anthony, Executive Administrator  
Paula Breger, Communications Director  
Lynn Dreyfuss Martin, Religious School Administrative Assistant  
Sheila Brown, Bookkeeper

[CantorB@TempleEmanu-El.org](mailto:CantorB@TempleEmanu-El.org)  
[RabbiK@TempleEmanu-El.org](mailto:RabbiK@TempleEmanu-El.org)  
[Office@TempleEmanu-El.org](mailto:Office@TempleEmanu-El.org)  
[Communications@TempleEmanu-El.org](mailto:Communications@TempleEmanu-El.org)  
[RSAdminAsst@TempleEmanu-El.org](mailto:RSAdminAsst@TempleEmanu-El.org)  
[Bookkeeper@TempleEmanu-El.org](mailto:Bookkeeper@TempleEmanu-El.org)

978.373.3861 | [www.TempleEmanu-El.org](http://www.TempleEmanu-El.org)

## DONATIONS

### **CANTOR MUSIC FUND**

*Daniel and Vera Goldberg*, in honor of Nathan Goldberg's bris  
*Sharyn Russell*, in appreciation of Shabbat Nariya

### **CLERGY DISCRETIONARY FUND**

*Shoshana Dodge, Paul Fitts, Karen Godek, Ann Jacobson, Judy Kroner, Andrea Pentabona, Sharyn Russell, and Joy Silvey*, in appreciation of Cantor Vera's b'nei mitzvah class.  
*Amy Sherr*, in appreciation of Cantor Vera

### **COWAN FAMILY CONTINUITY FUND**

*The Baldwin-Stella Families*, in loving memory of Larry Cowan

### **MERLE H. COWAN FUND**

*Judith Cowan*, in loving memory of her mother, Molly Cowan, on her yahrzeit

### **RUTSTEIN-FINKLESTEIN FUND**

*Jennifer, Derik, Jocelyne, and Jacqueline Lampron*, in loving memory of Uncle Harry Rutstein on his yahrzeit and Grampa Joseph Rutstein on his yahrzeit

### **BESSIE & VINSON W GRAD FUND**

*William Grad*, in loving memory of his father, Vinson W. Grad, on his yahrzeit  
*Richard Traister*, in loving memory of his uncle Vinson W. Grad on his yahrzeit

### **EVA AND BENJAMIN GRAD FUND**

*Richard Traister*, in loving memory of his grandfather Benjamin Grad on his yahrzeit

### **RABBI ABRAHAM AND SONIA JACOBSON FUND**

*Marshall and Ruth Myers*, in loving memory of her aunt Matilda Cohen on her yahrzeit

### **JEWISH CONTINUITY FUND**

*Loren and Michelle Goldstein*, in loving memory of Larry Cowan  
*Jennifer, Derik, Jocelyne, and Jacqueline Lampron*, in honor of Paula Breger receiving the Association of Jewish Libraries 2022 President's Award for outstanding contributions in service to the organization; in appreciation of Cantor Vera for a lovely service and all her help in preparation for Jacqueline's bat mitzvah; and in appreciation of Joy Silvey, Karen Godek, and Lisa Herzl for ushering during Jacqueline's bat mitzvah

### **KLINETSKY FAMILY FUND**

*Elaine Gross*, in honor and appreciation of Nancy LaFleur on her retirement

### **JANET & KEN KOPEL FAMILY CONTINUITY FUND**

*Allan Kopel*, in loving memory of his grandfather Dr. Henry Kapp on his yahrzeit

### **RICHARD & MIRIAM LEWIS FUND**

*Miriam Lewis Levinson*, in loving memory of her husband, Richard Lewis, on his yahrzeit

### **LITVACK HALPERN FAMILY FUND**

*Renée Halpern Graham*, in loving memory of her father, Irving Halpern, on his yahrzeit

### **MOSES SHYAVITZ FUND**

*Pearl Shyavitz*, in loving memory of her grandmother Pearl Gerber on her yahrzeit

### **LUCILLE AND OSCAR TRAISTER FUND**

*Richard Traister*, in loving memory of his uncle Louis Traister on his yahrzeit

### **TORAH FUND**

*Gerda Kalman*, L'Shana tovah to all

### **Yahrzeit Fund**

*Connie Mencis*, in loving memory of her mother, Mollie A. Mencis, on her yahrzeit  
*Michael Siegal*, in loving memory of his mother, Eva Siegal, on her yahrzeit  
*Gary Karelis*, in loving memory of his father, Saul J. Karelis, on his yahrzeit  
*Linda Levine*, in loving memory of her mother, Mollie A. Mencis, on her yahrzeit  
*Bernice Wolfe*, in loving memory of her devoted companion, Howard A. Boyle, on his yahrzeit  
*Brenda Wineapple*, in loving memory of her mother, Helene A. Wineapple, on her yahrzeit  
*Thelma Grant Caparell*, in loving memory of her husband, Albert Sydney Grant, on his yahrzeit  
*Andrea Rosebach*, in loving memory of her husband, Thomas Rosebach, on his yahrzeit  
*Mitch and Judy Kroner*, in loving memory of his mother, Dorothy Kroner, on her yahrzeit  
*Brian Gordon*, in loving memory of his aunt Miriam Kesslen on her yahrzeit  
*Marcia Schertz*, in loving memory of her father, Theodore Lang, and her sister, Zena Lang, on their yahrzeits  
*Anne Freedman*, in loving memory of her father, Hyman Klickstein, on his yahrzeit  
*Carol Shube*, in loving memory of her grandfather William Bendetson on his yahrzeit

To donate online,  
please click here.

 Donate

Thank you  
for your support!

## SOCIAL ACTION

*We are a welcoming, diverse, Reform, sacred community committed to embracing and implementing the principles of tikkun olam.*

*Through prayer, study, and social interactions, we honor and share our Judaic values across all generations.*

### Cook for Mitch's Place It's a Mitzvah!

For many years, Temple Emanu-El members have prepared meals for Mitch's Place, an overnight shelter for men which is part of the Emmaus network in downtown Haverhill.

If you are interested in participating in this mitzvah, please contact Lisa Herzl at [herzl@gmail.com](mailto:herzl@gmail.com).

Please do not drop meals off at Mitch's Place without first contacting Lisa.



*With care and compassion, Ruth's House, Inc. provides clothing and employment training opportunities to individuals and families in need throughout the Greater Merrimack Valley.*

To donate goods, money, or time, visit [www.ruthshouse.org](http://www.ruthshouse.org)

Ruth's House  
111 Lafayette Square  
Haverhill, Massachusetts

### Sacred Hearts Food Pantry Church Parking Lot (Next to 6 Carleton Avenue, Bradford)

Drop off  
Monday–Friday (8:15–11:00 am)

Pick up for those in need  
Monday, Wednesday, and Friday (8:15–11:00 am)

Since the start of the pandemic, Sacred Hearts Parish Food Pantry has expanded from helping 250 to 300 families a week to over 1,100 families each week. Many families in our area are now out of work and facing financial crisis. The Sacred Hearts Food Pantry gives a helping hand to those in need.

Please consider donating these nonperishable items: canned beans, one-pound bags of rice, peanut butter, jelly, canned tuna, canned chicken, cereal, boxed macaroni and cheese, tomato sauce, pasta sauce, crackers, paper towels, toilet paper, and diapers (sizes 3, 4, and 5).



## DONATE TO EMMAUS

Donate to help those in need find housing, job training, and other essential services. Visit [donatenow.networkforgood.org/emmausinc](http://donatenow.networkforgood.org/emmausinc)

Emmaus is also accepting donations of the following unopened items:

- \*cereal
- \*tuna
- \*jelly
- \*juice boxes
- \*granola bars
- \*canned/dry goods
- \*alternate peanut butters (sunflower, almond, etc.)
- \*shelf-stable milk
- \*individual fruit cups

Emmaus



"Where Everybody Matters"

Food donations can be shipped to or dropped off at Emmaus Inc.  
127 How Street  
Haverhill, MA 01830



## REMEMBERING THOSE AT YAHRZEIT

### September 3 7th of Elul

Goldie Berman  
William Berman  
Lillian Coltin  
Frances Forman  
Pearl Gerber  
Ruth Gilman  
Isaac Goldbaum  
Beverly Kule  
Betty Levy  
Manya Fleet Manzi  
Rebekah Markson  
Helen Miller  
Arlene Perham  
Adele Robbins  
Shirley Schiff  
Louis Swartz  
Helene Wineapple  
Shirley Yanku

### September 9 & 10 14th of Elul

Alan Bennett  
Frances Berman  
Lilyan Cummings  
Arthur Engel  
Irving Garber  
Minna Alfred Gordon  
Mollie Gordon  
Rose "Rae" Greenberg  
Sumner Donald Hershon  
Minnie Jacobson  
Rose Levine  
Solomon Mershon  
Simon Watnick  
Fannie Wise

### September 17th 21st of Elul

Betty Ash  
Murray Belsky  
Ralph Bender  
Leslie Brindis  
Jane Field

Jack Greenbaum  
Leonard Jaffe  
Rose Koffman  
Benjamin Kotzen  
William Rosen  
Hyman Rossen  
Esther Sibulkin  
Rose Goldstein Wise

### September 24th 28th of Elul

Isadore Ash  
Rebecca Berman  
Mae Espovich  
Laurel Fleet  
Dr. S. Frank Fox  
Sarah Goldberg  
Allen Jonas  
Aida Katz  
Helen Lefkoff  
Goldie Paul  
Reba Zelda Rutstein  
Doris Sulman  
Lena Zelinsky

### October 1 6th of Tishrei

Anna Barr  
Harold Barr  
Natalie Brenner  
Dr. Joseph H. Cohen  
Kaufman Cohen  
Samuel A. Cook  
Bernard Fischer  
Carl Goldberg  
Max Greenstein  
Jacob Hershman  
Esther Jacobs  
Mabel Kapp  
Rebecca Klinetsky  
Barbara Kotzen  
David Liftman  
Louis Mencis  
Bessie Ornstein  
Joseph Segal  
Lorraine Shapiro



Lotsa Helping Hands  
create community

**To receive help in your time of need,**  
call one of the following LHH coordinators:

|                |              |
|----------------|--------------|
| Cantor Vera    | 978.373.3861 |
| Sharyn Russell | 978.372.5777 |
| Lisa Anthony   | 978.373.3861 |

### Trusts, Wills, and Bequests

If you are interested in discussing  
gift and naming opportunities, please contact  
Cantor Vera ([CantorB@TempleEmanu-El.org](mailto:CantorB@TempleEmanu-El.org))

or

Lisa ([office@TempleEmanu-El.org](mailto:office@TempleEmanu-El.org)).

Thank you!

## ★ TEMPLE EMANU-EL ★

### Honor Your Father and Your Mother

It is a widely observed Jewish tradition to commemorate the passing of a loved one by memorializing those that have departed with a yahrzeit plaque on a dedicated memorial wall.

At Temple Emanu-El, these plaques are lit on the yahrzeit, or anniversary of death, and for Yizkor services.

Plaques are inscribed with the name of the deceased in both English and Hebrew as well as the date of the person's death. They are available to view whenever the sanctuary is open.

The one-time cost of the plaque is \$300. To purchase a plaque in honor of a departed loved one, please contact Lisa or Cantor Vera at 978.373.3861.

MONTH AT A GLANCE

# September

|              |   |   |
|--------------|---|---|
| September 3  | Shabbat Morning Service<br>Israel Chavurah  | 9:30 am<br>noon   |
| September 6  | Spirited Aging Together   | 10:00 am  |
| September 7  | Religious Practices Committee Meeting   | 7:30 pm   |
| September 8  | Introduction to Judaism   | 7:30 pm   |
| September 9  | Shabbat Evening Service   | 7:00 pm   |
| September 10 | Shabbat Morning Service<br>Weekly Parashah Study  | 9:30 am<br>1:00 pm  |
| September 11 | First Day of Religious School<br>Temple Open House<br>Choir Rehearsal   | 9:00 am<br>9:00 am<br>7:00 pm                                 |
| September 12 | The Torah of Tolkien: The Return of HaMelech  | 6:30 pm   |
| September 14 | Executive Committee Meeting   | 7:00 pm   |
| September 15 | Introduction to Judaism   | 7:30 pm   |
| September 17 | Shabbat Morning Service<br>S'lichot Service   | 9:30 am<br>8:00 pm  |
| September 18 | Religious School<br>Chesed Rosh HaShanah Packaging<br>J-Play!<br>High Holy Day Book/Torah Prep<br>High Holy Day Greeter Meeting<br>Confirmation Class | 9:00 am<br>10:00 am<br>9:30 am<br>11:30 am<br>noon<br>7:00 pm |
| September 20 | Choir Rehearsal   | 7:00 pm   |
| September 21 | Elul Song Session   | 7:00 pm   |
| September 24 | Shabbat Morning Service<br>Weekly Parashah Study  | 9:30 am<br>1:00 pm  |
| September 25 | Religious School (Apple Picking @ Barker Farm)<br>Cemetery Service<br>Erev Rosh HaShanah  | 10:00 am<br>1:00 pm<br>7:00 pm                                |
| September 26 | Rosh HaShanah Day One   | see page 8  |
| September 27 | Rosh HaShanah Day Two   | see page 8  |
| September 29 | Dayenu Circle   | 6:30 pm   |







Temple Emanu-El

514 Main Street  
Haverhill, MA 01830  
978.373.3861  
www.TempleEmanu-EL.org



Temple-Emanu-El-in-Haverhill-MA



twitter.com/TempleEmanuLHav



templemanuelhaverhill

PLEASE PATRONIZE OUR ADVERTISERS



The Brookline Schlepper

Same Day Pick-Up & Delivery to Your Door  
Round-trips start at \$25.00

Robin Taylor  
(978) 479-7691



The Butcherie  
Israel Book Shop

Kupel's  
Kolbo



Your ad could be here!

Contact [office@TempleEmanu-El.org](mailto:office@TempleEmanu-El.org) for details.



**COWAN**  
INSURANCE AGENCY, INC  
SERVICE BY PEOPLE, NOT VOICEMAIL

Specializing in  
Business & Personal Insurance

Phone: 978.372.1451

359 Main Street  
Haverhill, MA 01830

E-mail: [cowanins@tiac.net](mailto:cowanins@tiac.net)  
Fax: 978.521.4669

978-482-6063

[gfred2020@aol.com](mailto:gfred2020@aol.com)

Frederick Law Offices, P.C.

Glenn A. Frederick  
Attorney

65A Flagship Drive  
North Andover, MA 01845

Estate Planning and Administration  
Personal Injury Law | Family Law

LAW OFFICE OF  
**GERALD L. SHYAVITZ**

General Practice • Estate Planning  
Free Consultations

Gerald L. Shyavitz, Esq.

[www.estateplanninghaverhill.com](http://www.estateplanninghaverhill.com)

Bus: 978.241.2682 G.Shyavitz@comcast.net  
Cell: 603.401.5655 11 Kenoza Ave., Haverhill, MA 01830



TOLL FREE: 866.99.DEPOT  
LOCAL: 603.222.9066  
**THE DUMPSTER DEPOT**  
Waste Recycling Services

Got a "Trashy" Question?  
For an answer or **FREE** price quote!  
Visit us at [www.DumpsterDepot.com](http://www.DumpsterDepot.com)

H.L. Farmer & Sons Funeral Homes



978•372•9311

106 Summer Street  
Haverhill

210 South Main Street  
Bradford